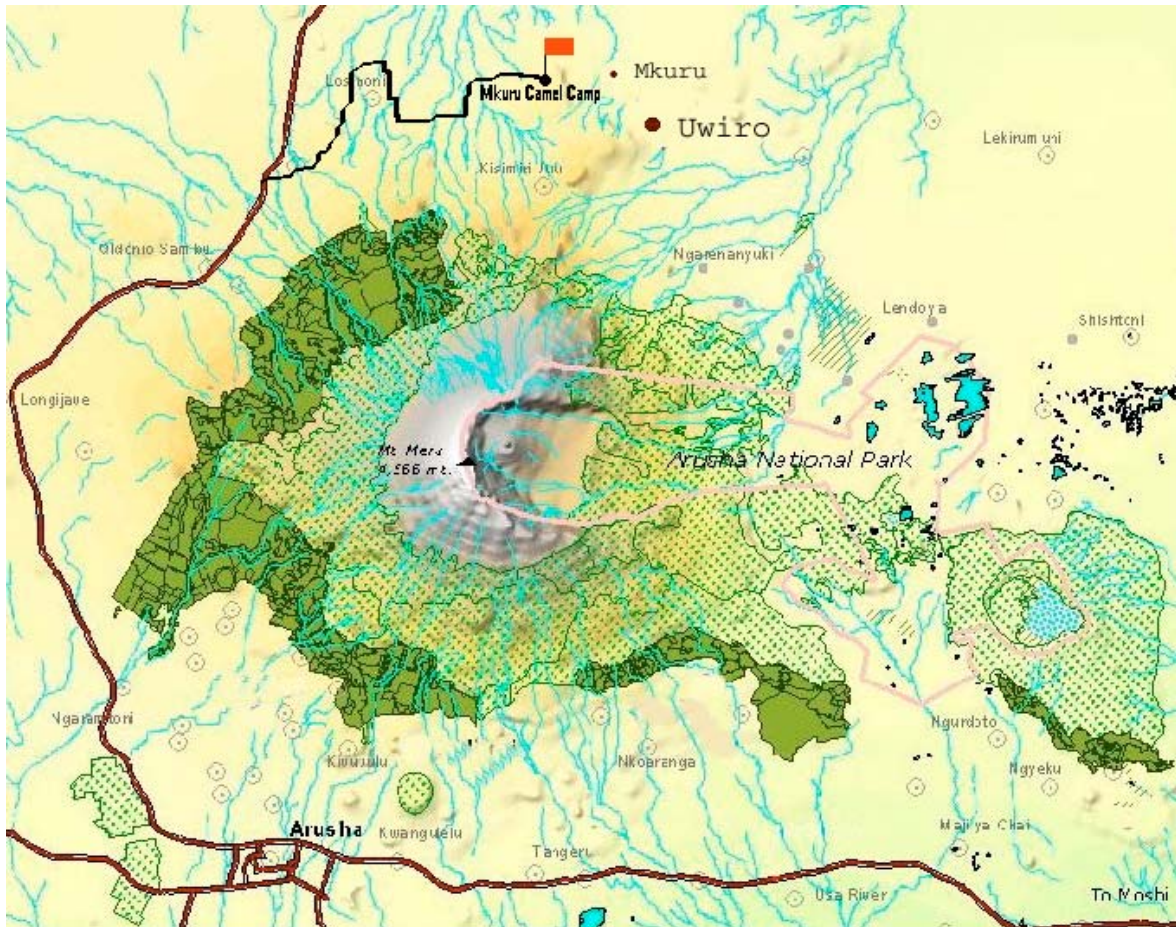


HOW TO REACH MKURU CAMEL CAMP



Mkuru Camel Camp is about 65 km far from Arusha town.
(To reach the camp you will need a 4-wheels vehicle)

From Arusha:

- follow the Nairobi road, towards Nairobi, for about 45 km from Arusha centre
- 1 km after Oldonyo Sambo village you will see on your right a small sign for Mkuru Camel Camp
- turn right on a rough road and you are about 14 km far from the camp

According to weather conditions the rough road may change.
Contact us before departure for more details.

T: +255 784 724498 / +255 787 270989

E: info@mkurucamelsafari.com